

# State of Wyoming Corner Record

(In compliance with the **CORNER PERPETUATION AND FILING ACT**, Wyoming Statutes, 1997 Section 33-29-140 et. seq., and the Rules and Regulations of the Board of Professional Engineers and Professional Land Surveyors)

Reverse side of this form may be used if more space is needed.

Record of original survey and citation of source of historical information (if corner is lost or obliterated). Description of corner monumentation evidence found and/or monument and accessories established to perpetuate the location of this corner. Sketch of relative location of monument, accessories, and reference points with course and distance to adjacent corner(s) (if determined in this survey). Method and rationale for reestablishment of lost or obliterated corner.

## W<sup>1</sup>/<sub>4</sub> CORNER, SECTION 11, T.13N., R.67W., 6TH P.M., LARAMIE COUNTY, WYOMING

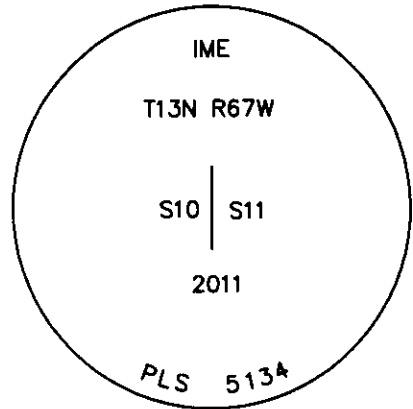
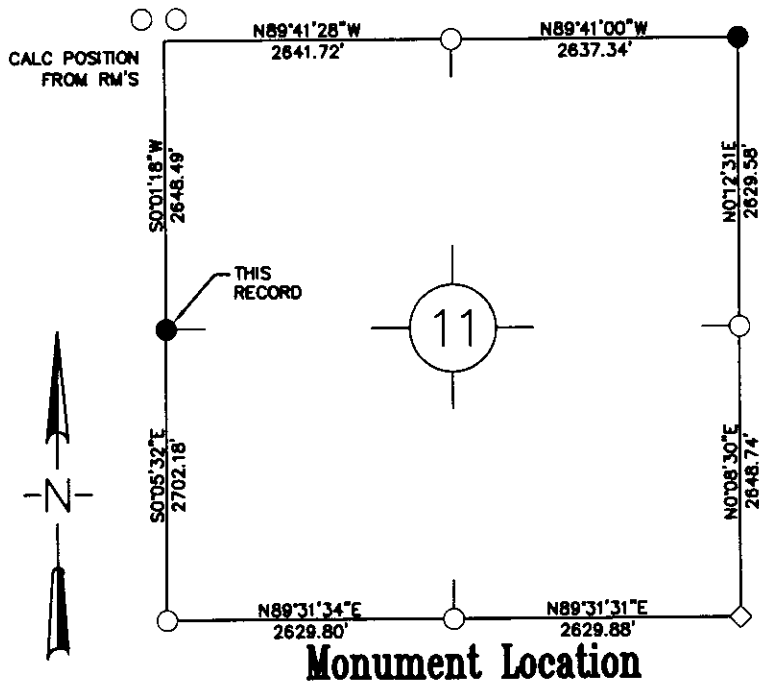
**FOUND:** LOOSE MARKED STONE 16"x6"x8"  
SCRIBED  $\frac{1}{4}$  NOT IN POSITION AS SHOWN ON  
CORNER RECORD FILED BY JOHN STEIL, LS  
2500, BOOK 1284, PAGE 1602.

**SET:** SET  $\frac{5}{8}$ "X24" REBAR WITH 2 $\frac{1}{2}$ " ALUMINUM CAP FROM  
TIES SHOWN ON JOHN STEIL CORNER RECORD (PK NAIL IN  
FENCE POST SOUTH IS GONE). EXISTING PK NAIL IN POWER  
POLE IS 96.15' NORTHWEST OF CAP. SET NAIL AND SHINER  
IN FENCE POST 32.3' NORTH OF CAP. CENTERLINE OF  
OVERHEAD EAST-WEST POWERLINE IS 38' NORTH. BURIED  
GRANITE STONE SCRIBED WITH  $\frac{1}{4}$  ALONG EAST SIDE OF SET  
MONUMENT.

**Note:** Bearings and distances are relative to NAD  
1983 Wyoming State Plane East Zone.  
Distances shown are ground.

### LEGEND

- ⊙ FOUND BRASS CAP
- FOUND ALUMINUM CAP
- ◇ FOUND STONE
- SET 2 $\frac{1}{2}$ " ALUMINUM CAP  
ON  $\frac{5}{8}$ " X 24" REBAR STAMPED  
IME PLS 5134.



### Monument Inscription

Date of Field Work: 1/27/2011

Office Reference: Book: 1100 Page: 42 15265-RS (Pt. #231)  
Office Reference: Book: 1104 Page: 56 15265-RS (Pt. #6727)

### Cross Index Plat

	1	2	3	4	5	6	7	8	9	10	11	12	13	14	15	16	17	18	19	20	21	22	23	24	25
A	+	+	+	+	+	+	+	+	+	+	+	+	+	+	+	+	+	+	+	+	+	+	+	+	+
B	+	+	+	+	+	+	+	+	+	+	+	+	+	+	+	+	+	+	+	+	+	+	+	+	+
C	+	6	+	5	+	4	+	3	+	2	+	1	+	+	+	+	+	+	+	+	+	+	+	+	
D	+	+	+	+	+	+	+	+	+	+	+	+	+	+	+	+	+	+	+	+	+	+	+	+	
E	+	+	+	+	+	+	+	+	+	+	+	+	+	+	+	+	+	+	+	+	+	+	+	+	
F	+	+	+	+	+	+	+	+	+	+	+	+	+	+	+	+	+	+	+	+	+	+	+	+	
G	+	7	+	8	+	9	+	10	+	11	+	12	+	+	+	+	+	+	+	+	+	+	+	+	
H	+	+	+	+	+	+	+	+	+	+	+	+	+	+	+	+	+	+	+	+	+	+	+	+	
J	+	+	+	+	+	+	+	+	+	+	+	+	+	+	+	+	+	+	+	+	+	+	+	+	
K	+	+	+	+	+	+	+	+	+	+	+	+	+	+	+	+	+	+	+	+	+	+	+	+	
L	+	18	+	17	+	16	+	15	+	14	+	13	+	+	+	+	+	+	+	+	+	+	+	+	
M	+	+	+	+	+	+	+	+	+	+	+	+	+	+	+	+	+	+	+	+	+	+	+	+	
N	+	+	+	+	+	+	+	+	+	+	+	+	+	+	+	+	+	+	+	+	+	+	+	+	
O	+	+	+	+	+	+	+	+	+	+	+	+	+	+	+	+	+	+	+	+	+	+	+	+	
P	+	19	+	20	+	21	+	22	+	23	+	24	+	+	+	+	+	+	+	+	+	+	+	+	
Q	+	+	+	+	+	+	+	+	+	+	+	+	+	+	+	+	+	+	+	+	+	+	+	+	
R	+	+	+	+	+	+	+	+	+	+	+	+	+	+	+	+	+	+	+	+	+	+	+	+	
S	+	+	+	+	+	+	+	+	+	+	+	+	+	+	+	+	+	+	+	+	+	+	+	+	
T	+	30	+	29	+	28	+	27	+	26	+	25	+	+	+	+	+	+	+	+	+	+	+	+	
U	+	+	+	+	+	+	+	+	+	+	+	+	+	+	+	+	+	+	+	+	+	+	+	+	
V	+	+	+	+	+	+	+	+	+	+	+	+	+	+	+	+	+	+	+	+	+	+	+	+	
W	+	+	+	+	+	+	+	+	+	+	+	+	+	+	+	+	+	+	+	+	+	+	+	+	
X	+	31	+	32	+	33	+	34	+	35	+	36	+	+	+	+	+	+	+	+	+	+	+	+	
Y	+	+	+	+	+	+	+	+	+	+	+	+	+	+	+	+	+	+	+	+	+	+	+	+	
Z	+	+	+	+	+	+	+	+	+	+	+	+	+	+	+	+	+	+	+	+	+	+	+	+	
	1	2	3	4	5	6	7	8	9	10	11	12	13	14	15	16	17	18	19	20	21	22	23	24	25

Firm/Agency, Address

Inberg-Miller Engineers  
124 East Main Street  
Riverton, WY 82501

Telephone Number: 307-856-8136

This corner record was prepared by me or under my direction and supervision.

**SEAL & SIGNATURE**

*Randall S Steil*  
4/15/11

RECORDED 4/19/2011 AT 8:28 AM REC# 567046 BK# 2216 PG# 926  
DEBRA K. LATHROP, CLERK OF LARAMIE COUNTY, WY PAGE 1 OF 1

Corner Name W<sup>1</sup>/<sub>4</sub> Corner Section 11, T 13 N, R 67 W, 6th P.M. Cross-Index No.: G-17  
County: Laramie, Wyoming